

Paper Geographies

Press Release
(July 2022)

Paper Geographies is an exhibition at the Arles Exposition Off Photography Festival 2022 in the South of France. Taking place at *Atelier Alonso* during the opening week of *les Rencontres d'Arles* (4th - 10th July 2022), the exhibition brings together 20 artists who use photography to explore the relationships between materiality and place. The expanded field of photography is represented by works that challenge the medium's own specificity; including documentary and appropriated imagery, analogue and digital processes, performance and sculpture. This diversity of practice asks the viewer to consider how the physicality of the photographic image impinges on our sense of place in the world.

Each of the artists in *Paper Geographies* proposes a critical relationship to place, whether local or global, real or imagined. By foregrounding the performative act of the image - its material agency over its representational qualities - they expose the interplay between image and place. Works address locations from Asia, Europe and the UK, and themes of globalisation, home, borders, migration, trade and the Anthropocene are explored.

Visual practices of material culture have commodified space, and photography has both naturalised and constructed a highly artificial image of the Earth's surface, often with dire consequences for its ecosystems and communities. Today, it is hard to do anything other than scratch at the surface of the world, as we rarely encounter it in an unmediated way. The artists in this exhibition playfully trespass on the construction site of the image and its ideologies. They use photography to both think about and make place. Their works collectively culminating in an index of our own lost civilization.

Paper Geographies is a project that brings together emerging and established artists from across Manchester School of Art and the School of Digital Art at Manchester Metropolitan University. This exhibition marks the second iteration of *Paper Geographies* - the inaugural exhibition was held at Manchester Central Library in 2020. A new publication featuring artists from across both exhibitions will be launched at Atelier Alonso during the opening week of the Arles Photography Festival.

Artists:

James Dewhirst
Nina Mhach Durban
Sue Fox
Ted Holborn
Sarah Howe
Alan Jones
Sophie Lee
Tze Yan Lim
Ben McDonnell
Nicole Mullan
Richard Page
Polly Palmerini
Shivani Patel
David Penny
Ellie Rankin
Jake Robinshaw
Ela Skórska
Evie Spicer
Sylvia Waltering
Liúsaidh Ashley Watt

Exhibiting at:
Arles Exposition Off 2022
Atelier Alonso
5 Rue De Grille, 13200
Arles, France

Open:
4th July - 10th July 2022

Private View:
Wednesday 6th July,
6.00 pm.

www.papergeographies.com
@papergeographies

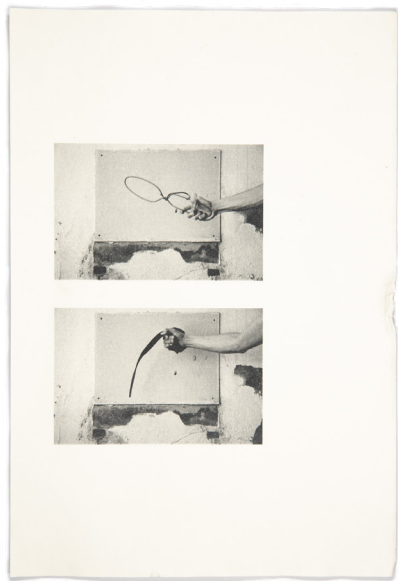
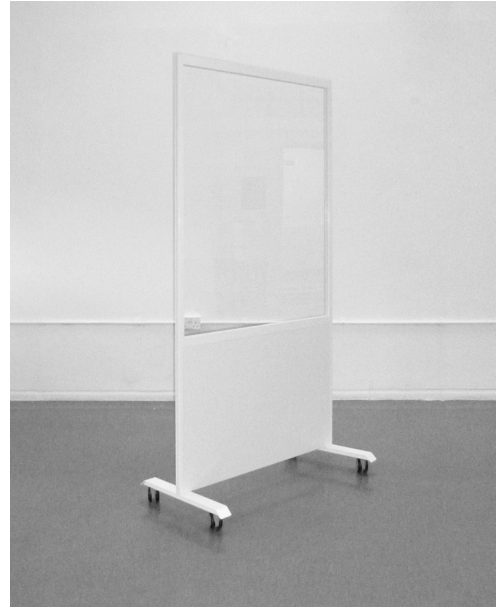
Curated by Richard Page

For further information contact
on r.page@mmu.ac.uk



Evie Spicer, *Embedded* (2020)

Ben McDonnell, *Temporary Structures* (2022)



Tze Yan Lim, *3+1* (2021)

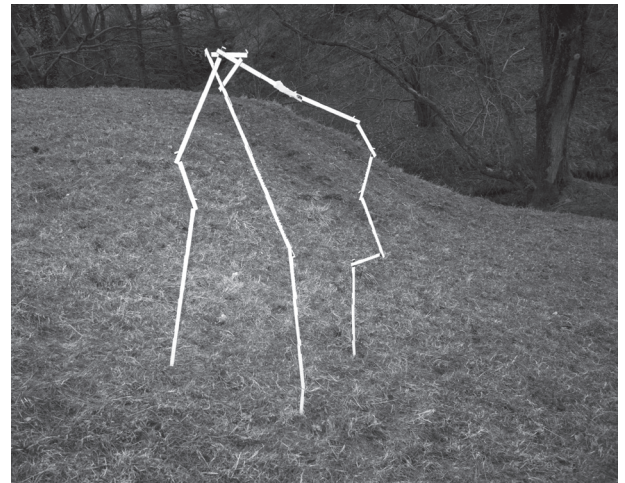
Nicole Mullan, *North with the Spring* (2021)



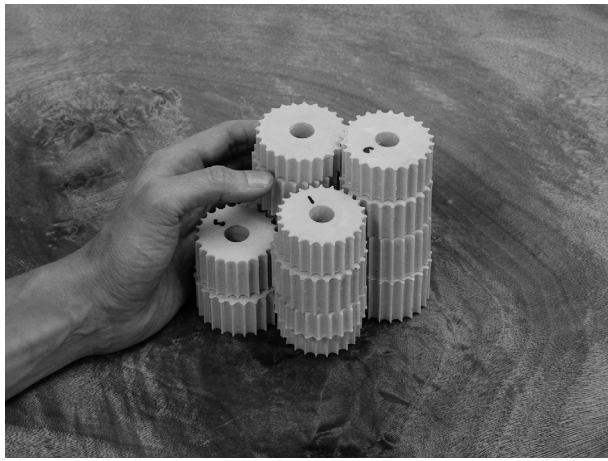
Nina Mhach Durban, *And You'll Keep Watching Me* (2022)



Shivani Patel, *Puja* (2022)



Polly Palmerini, *Chimera* (2020)



David Penny, *A Fallen Line of Marble Drums* (2020)

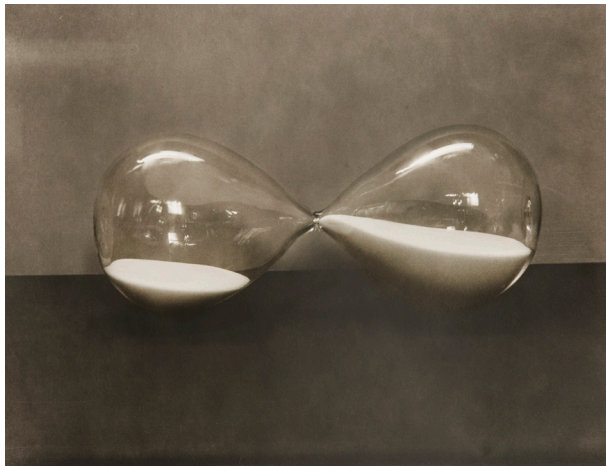


Lúisáidh Ashley Watt, *Guised* (2020)

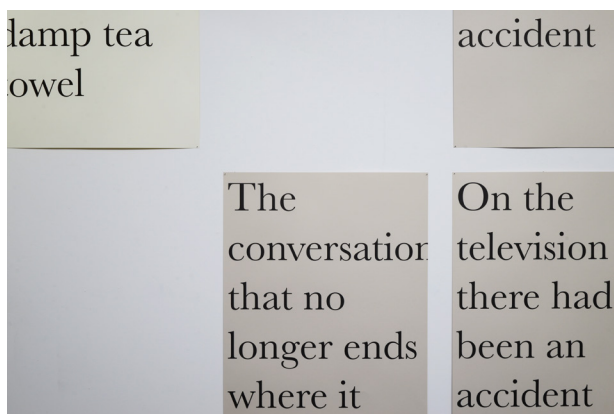


Richard Page, *Tokyo* (2019)

Ted Holborn, *Aporia* (2020)



Ela Skórska, *Caesura* (2022)



Sophie Lee, *Always Something Moves* (2020)



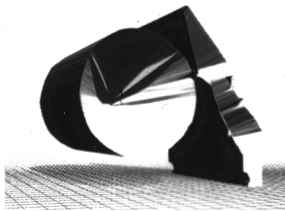
James Dewhirst, *Here, They Hide* (2022)

Sue Fox, *Visceral Tear* (2018)



Sylvia Waltering, *Solid Ground Drifting* (2021)

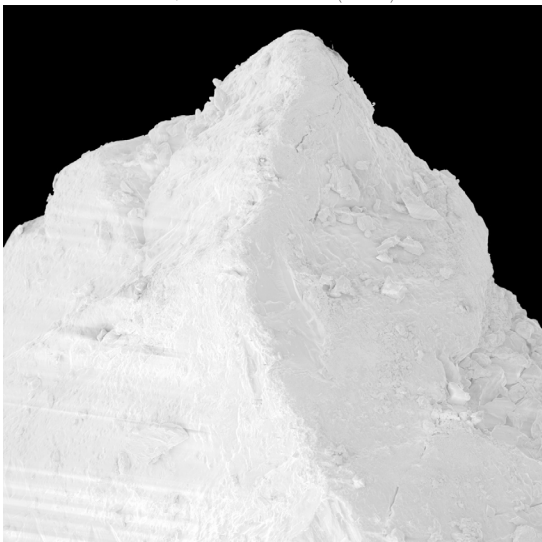
Ellie Rankin, *Screen Games* (2021)



Sarah Howe, *Approximate* (2022)



Jake Robinshaw, *Give and Take* (2022)



Alan Jones, *Orphaned Objects* (2017)